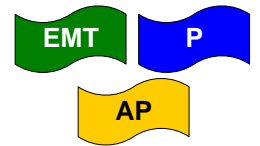


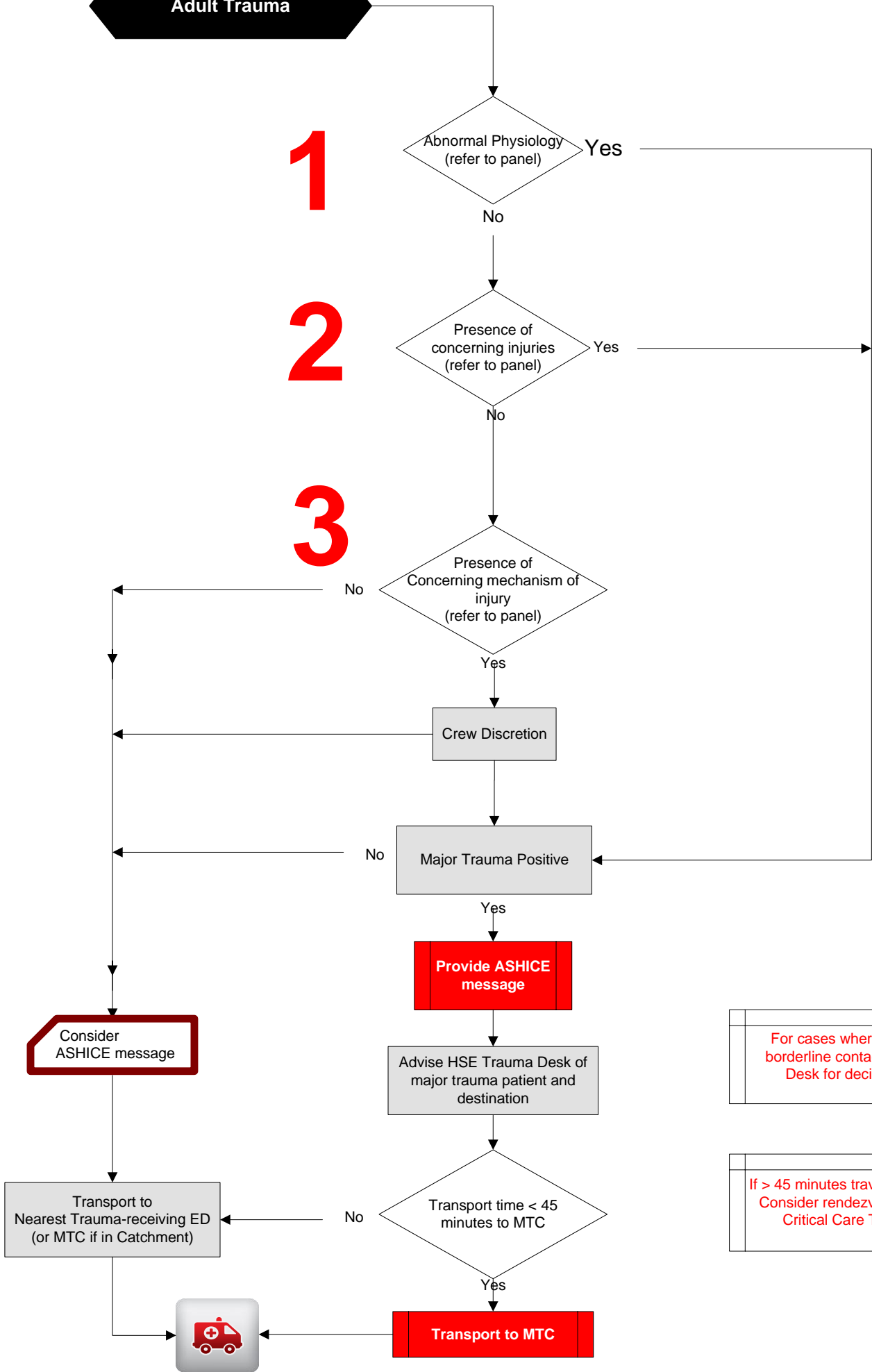
Major Trauma Centre Triage Decision Tool

4/5/6.8.11
Version 1, 02/2023



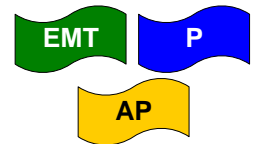
Adult Trauma

1
2
3



For cases where travel time is borderline contact HSE Trauma Desk for decision support

If > 45 minutes travel to MTC Consider rendezvous with Critical Care Team



1

Abnormal Physiology Parameters	
SpO ₂ :	< 90% on air
Respiratory Rate:	< 10 or > 29
Heart Rate:	> 120 BPM after adequate analgesia
Systolic Blood Pressure:	< 90 mmHg at any stage
Glasgow Coma Scale:	< 13 or deteriorating

2

Injuries	
Airway	Airway injury or potential airway injury
	Hoarseness or stridor
Chest	Evidence of respiratory compromise
	Cyanosis, crepitus, subcutaneous emphysema
	Suspicion of multiple rib fractures
	Severe pain
	Seatbelt abrasion, contusion, evidence of blunt impact
Haemorrhage	Significant chest wall trauma
	Severe haemorrhage or suspected severe haemorrhage
Head	Arterial bleeding requiring tourniquet control
	Suspected open/depressed skull fracture
	Signs of base of skull fracture
	> 2 episodes of vomiting
	Seizure following head injury
Spine	head injury if patient on anticoagulants
	head injury with focal neurological deficit
	Spinal trauma suggested by new, abnormal neurology
Limbs	Vsible deformity
	Priapism
	Severe pain
	Fracture to 2 or more of femur, tibia, humerus
Penetrating	Major compound fracture or open dislocation
	Crushed, degloved, mangled, pulseless limbs
Abdomen	Amputation above wrist or ankle
	All penetrating injuries except isolated superficial limb injuries
Pelvis	Severe pain, rigidity, distension, swelling
	Seatbelt abrasion, contusion, evidence of blunt impact
Burns	Suspected major pelvic fractures
	> 20% BSA
	Suspected respiratory tract burns

3

Concerning Mechanism of Injury	
Fall	> 3m (or 2 x patient's own height)
	Fall off Ladder > 1 m
Large animal incident	Collision, fall , trampled
	Death in same vehicle
RTC	Ejection
	Significant intrusion
	Intrusion with compression
	Damage to A post of vehicle
	Prolonged extrication time (> 30 min)
	Motorcycle > 30 KPH
	Cyclist > 30 KPH
	Any pedestrian v vehicle
	Bullseye Windscreen
High speed RTC (> 60 KPH)	
Electrocution	High voltage electrocution
Burns	Isolated burns may be considered for triage direct to burns unit
	Any rapid deceleration incident
Other	Availabile information consistent with high risk of injury
	Focal blunt trauma to head or torso

MOI Criteria are not exclusive or absolute. Any significant injuries involving more than one body region or requiring specialist care to preserve life, limb or quality of life should be considered for triage to MTC